

8MP

RS-CH340N4KRB-LTF-LF28PW-M
8MP Network Fixed Warm Light-Turret Camera



Features:

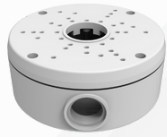
- 1/2.8" 8MP Progressive CMOS
- Color 0.007Lux @(F1.0,AGC ON) ; B/W 0lux @ IR ON
- 2.8mm Focal Length,IR upto 30m
- WarmLight Viewable Length upto 25m
- Micro SD slot, up to 256GB, Built-in microphone,IP67
- Supports License Plate Recognition and Facial Recognition
- Smart Feature : FD,PID,LCD,PD/VD,SOD,CC,CD,QD,HM

Specifications

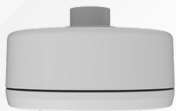
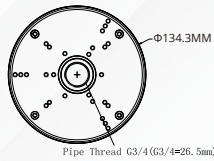
Imaging Device	1/2.8"
Effective Pixels	8MP 3840(H)×2160(V)
Scanning System	Progressive CMOS
Min. Illumination	Color 0.007lux @ F1.0(AGC ON) ; B/W 0 lux @ IR ON
Lens Type	
Focal Length (Zoom Ratio)	2.8 mm
Max. Aperture Ratio	F No. 1.0
Angular Field of View	Horizontal: 105°, Vertical: 55°, Diagonal: 125°
Min. Object Distance	2m
Lens Type	M12
Operational	
IR LED	2
WarmLight	2
IR Viewable Length	Up to 30m
WarmLight Viewable Length	Up to 25m
Type of complementary light	Default warm light, switchable infrared light
Backlight Compensation	Off/On (5 Zone)
Wide Dynamic Range	WDR
Digital Noise Reduction	3D DNR
Motion Detection	Off/On (8 Level)
Image Setting	Full-Color Mode/Day&Night Mode/Schedule
Privacy Masking	Off/On (4 Zone, Rectangle)
Gain Control	Auto
White Balance	Auto/Manual
Electronic Shutter Speed	1/5 ~ 1/20000s
On-Board Storage	Micro SD slot, up to 256GB
Alarm	NA
Audio	Built-in microphone
Hardware Reset	Yes
Smart Feature	Face Recognition (FR) Human&Vehicle Detection (PD&VD) Perimeter Intrusion Detection (PID) Line Crossing Detection (LCD) Cross Counting (CC) Stationary Object Detection (SOD) Heat Map (HM) Crowd Density Detection (CD) Queue Length Detection (QD) license Plate Detection (LPD) Rare Sound Detection (RSD)
Network	
Ethernet	RJ45(10/100BASE-T)
Video Compression Format	H.265/H.264
Resolution	Main Stream @30fps 8MP(3840x2160),5MP(2592x1944,3072x1728), 4MP(2592x1520),3MP(2304x1296),1080P(1920x1080), 960P(1280*960),720P(1280x720), Sub Stream @30fps 720P(1280x720),VGA(640x480),QVGA(320x240) Mobile Stream @30fps VGA(640x480), QVGA (320x240)

Video Quality Adjustment	256Kbps ~ 16Mbps
Bitrate control method	CBR/VBR
Streaming Capability	Triple-Stream(Main/Sub/Mobile)
IP	IPv6
Protocol	TCP/IP,HTTP,DHCP,DNS,DDNS,RTP/RTSP,SMTP,NTP,UPnP,SNMP,HTTPS,FTP
Security	IP address filter;complicated password;Authenticated username and password
Streaming Method	Unicast/Multicast
Application Programming Interface	ONVIF(Profile S/G/T)
Web Viewer	IE10/11 Safari V12.1 above Firefox V.52 above Google chrome V.57 above Edge V.79 above
Environmental	
Operating Conditions	-35~+60°C/less than ≤ 95% RH
Ingress Protection	IP67
Electrical	
Input Voltage / Current	D12V/POE(IEEE802.3af)
Power Consumption	TBD
Mechanical	
Material	Metal
Dimension (WxHxD)	100*100*90mm
Weight	415g

Accessories



RS-CXH-I



RS-CXH-J

